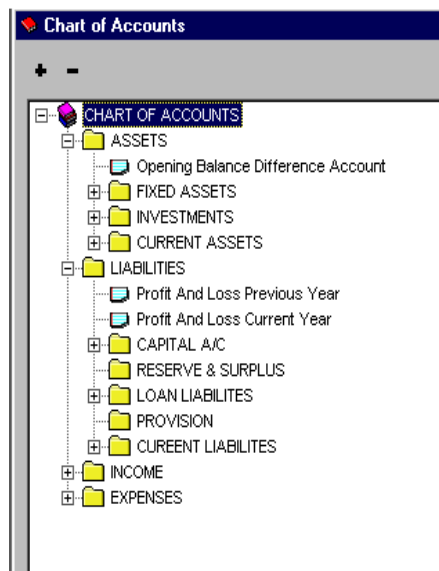




Easy to use Financials is the central hub where all accounting transactions are accumulated and used to generate Financial Statements. EnterpriseBiz™ Multi-Company financial consolidation lets you track Account Balances across Branches.

## FLEXIBLE TO FIT YOUR NEEDS

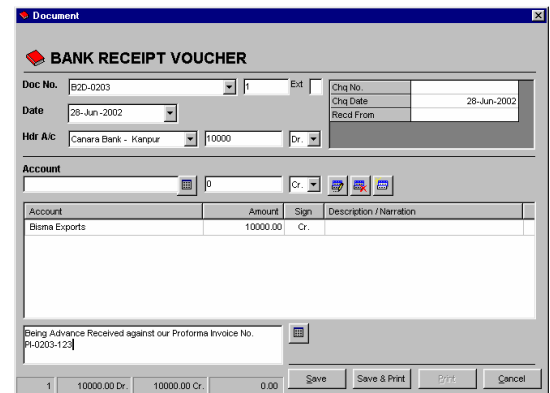
Easily configurable, you can set up Groups, Sub-Groups and Accounts to your operating structure, and select from various user-definable options that help you better manage your time and business. Reference numbering can be set to automatic or manual, daily, monthly or annual. Multiple sets of books can be maintained in a single database allowing for income and expenses, and statistical information to be compared in context to your head office and across the organization.



## POWERFUL DATA ENTRY

You can tailor data entry to your business needs, with the option of using several types of transaction types, including single book for all

banks or multiple bank books. System defaults accelerate data entry by populating the header account fields ahead of time with user-definable default values, allowing you to focus on the task at hand — without needing to search for the proper account.



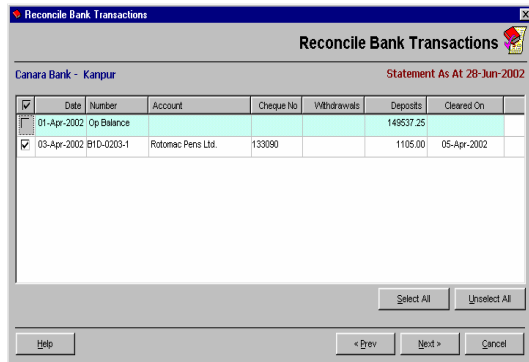
Financial data generated from all other modules such as Sales, Purchase, Inventory and Fixed Assets are posted to pre-defined account heads saving time, implementing controls and reducing errors.

## PROFIT / COST CENTER ALLOCATION

EnterpriseBiz™ uses common dimensions throughout the suite. This facilitates comparing apple to apples while doing any analysis. The apportionment facility while entering transactions in Financials and other modules of EnterpriseBiz ensure that necessary allocations are done as inputs to reporting and analysis.

## USER FRIENDLY BANK - RECO

Bank Reconciliation is a regular activity for the accounts department requiring facilities. The Pause and Resume facility enables the user to take a temporary break in the Reco session and resume back to finish it. The facility to record "Cleared On" date allows the accounts user to track the dates on which Cheque hit the bank.



## DRILL DOWN & SHUFFLE WINDOW

EnterpriseBiz™ financials presents drill down view of major reports such as Ledgers, Group Balance Statement, Trial Balance, Balance Sheet upto the transaction level. It also facilitates searching on current window and shuffling between active windows to move from one view to another. You can Cascade and Tile the windows to view the data in your way.

Account	Month	Debit	Credit	Balance
<b>Bisma Exports</b>	<b>Op Balance</b>	<b>54364.00</b>	<b>0.00</b>	<b>54364.00 Dr.</b>
	Apr-2002	0.00	0.00	54364.00 Dr.
	May-2002	0.00	0.00	54364.00 Dr.
	Jun-2002	0.00	0.00	54364.00 Dr.
	<b>Total</b>	<b>54364.00</b>	<b>0.00</b>	<b>54364.00 Dr</b>

## COMPREHENSIVE FINANCIAL REPORTING & CONSOLIDATION

Financial reporting is at the heart of the EnterpriseBiz™ Financials, allowing you to generate financial results by built-in reports

or customized Excel Based Single or Multi-company Financial Analysis.

The Multi-Company Consolidation facilitates Cross Tab Analysis of most of financial reports including Trial Balance, Balance Sheet, Expense Statement and so on...

## OUTSTANDING AGEING ANALYSIS

Software keeps track of outstanding entries entered directly into Financials or posted through EnterpriseBiz Sales or Purchase modules. It presents the reports in standard Ageing Columns and in Dues / Overdues Format.

## FOR MORE INFORMATION

**☎ 020-66520725 / 722**

Clariance IT Solutions Pvt Ltd

E-Mail: [info@EnterpriseBiz.Net](mailto:info@EnterpriseBiz.Net)

Web: [www.EnterpriseBiz.Net](http://www.EnterpriseBiz.Net)